

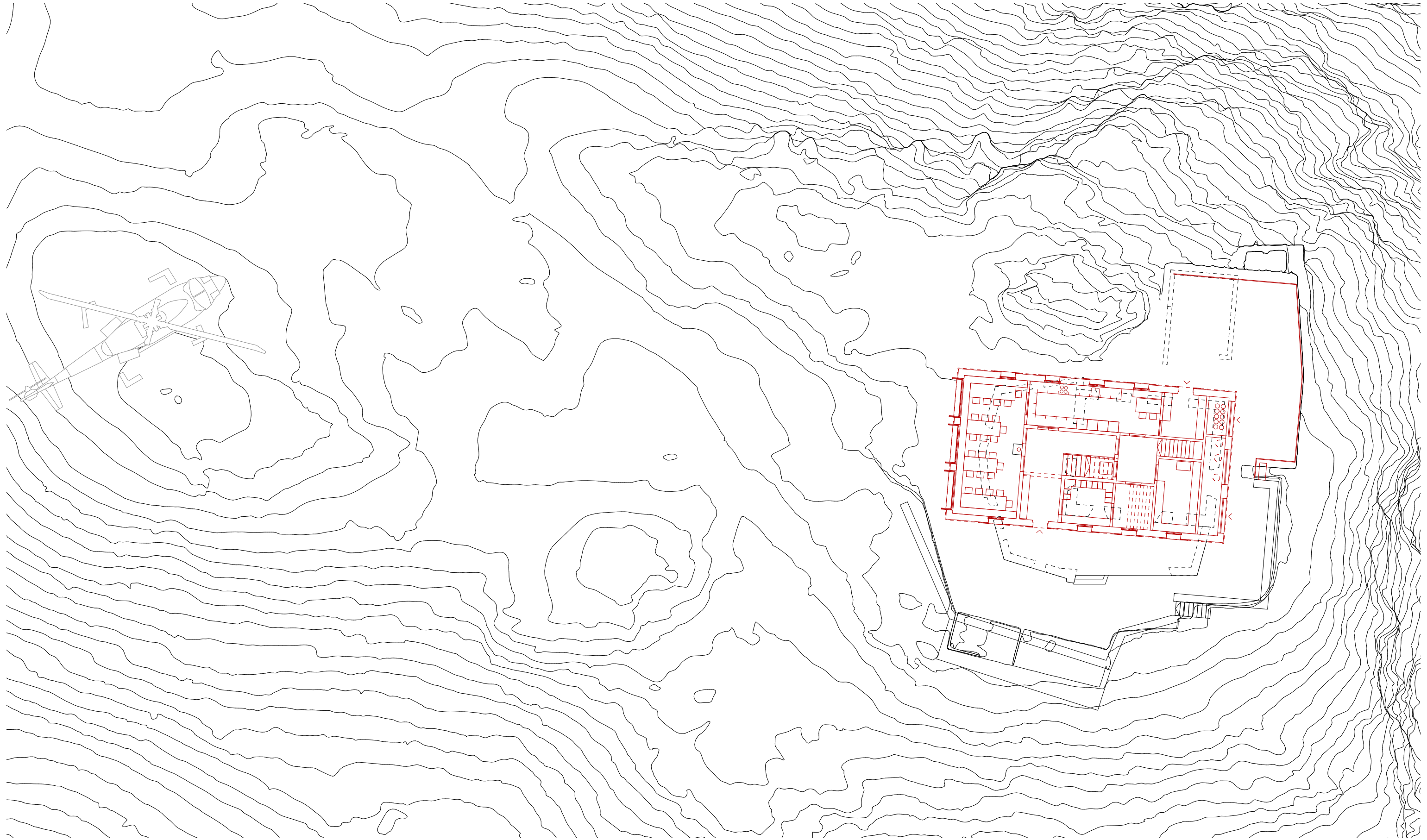
RHA

116_Cavardirashütte, Disentis
Vorprojekt

RHA

116

Cavardirashütte, Disentis

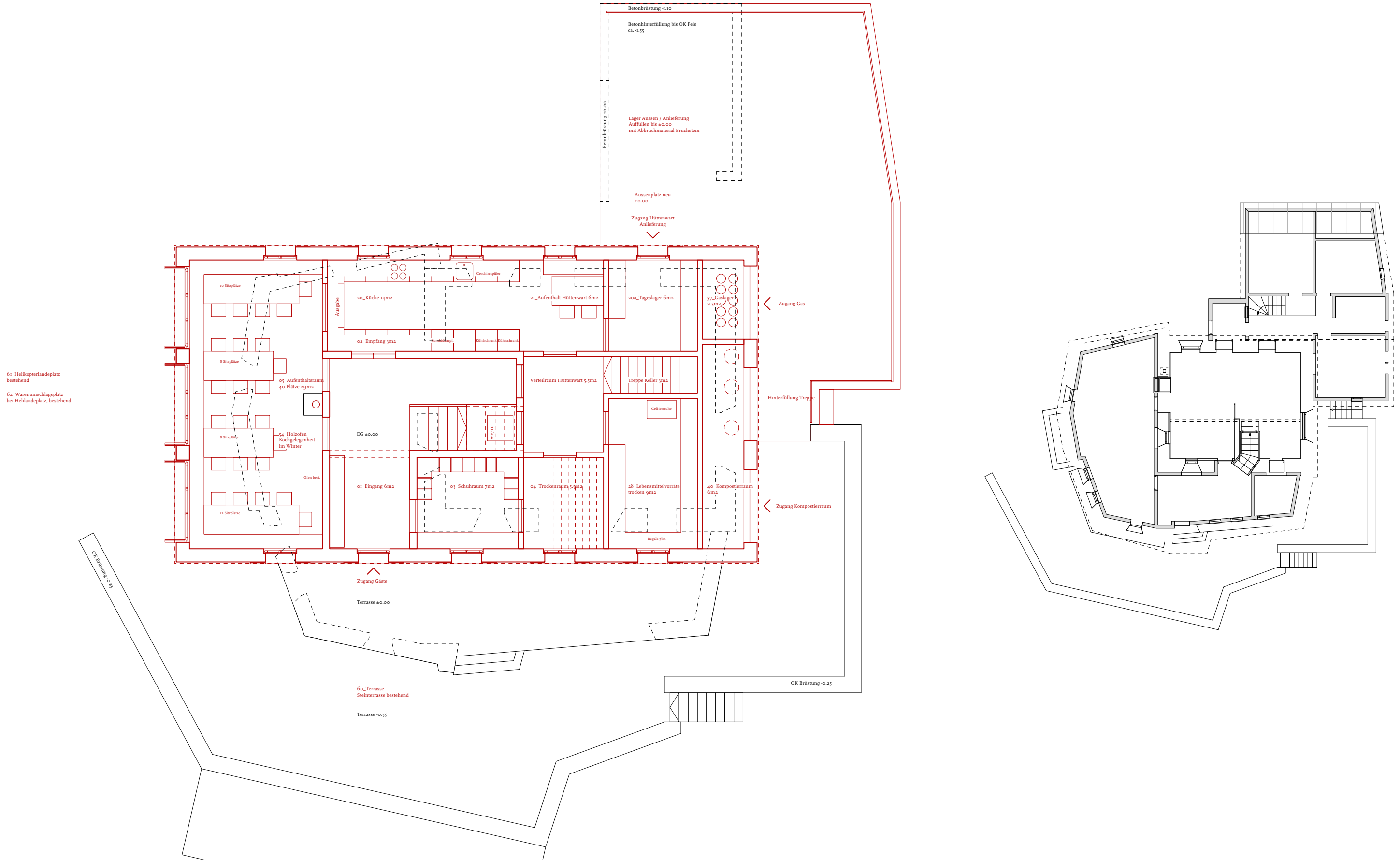


Situation 1:200

Vorprojekt



RHA
116
Cavardirashütte, Disentis



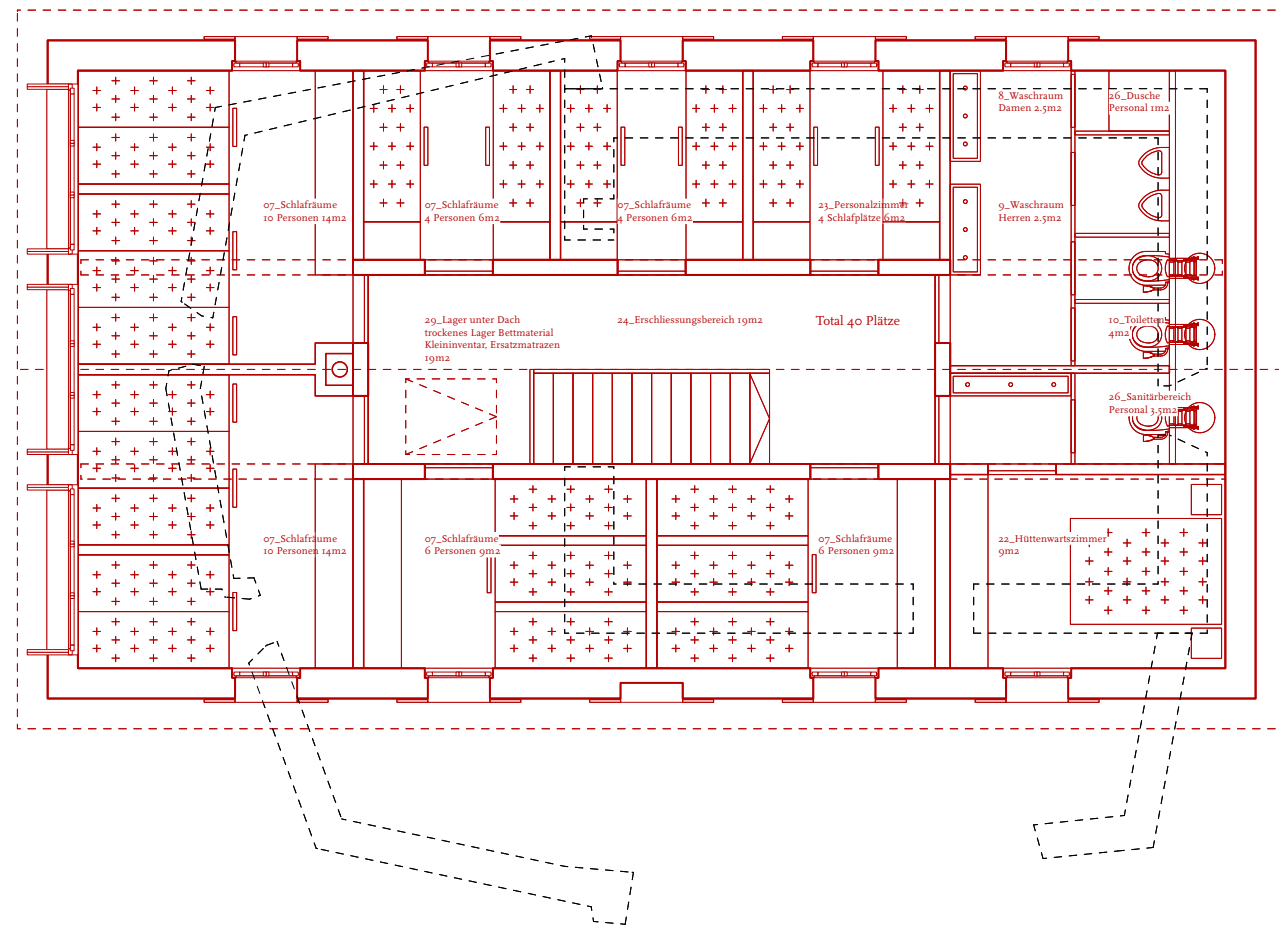
61_Helikopterlandeplatz bestehend
 62_Warenumschlagplatz bei Helikopterlandeplatz, bestehend

Erdgeschoss 1:100

Vorprojekt

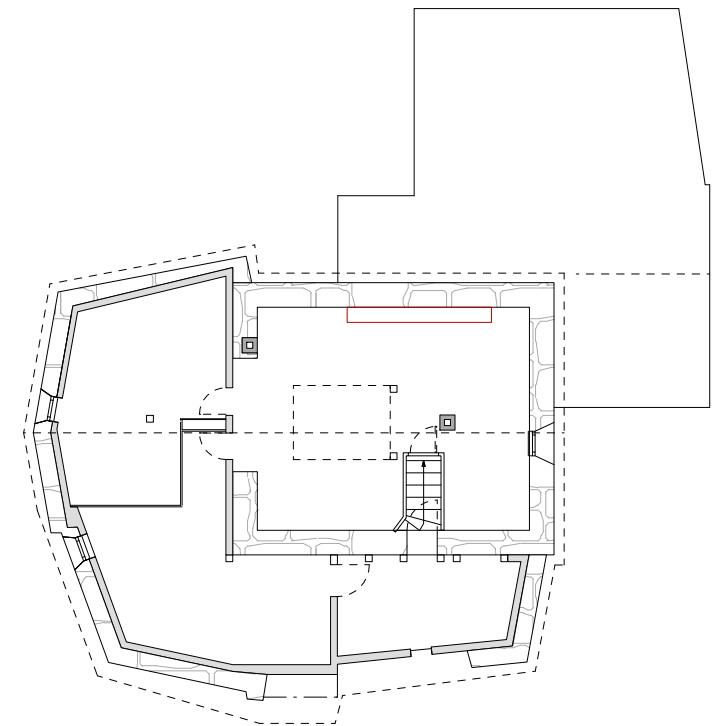
Erdgeschoss Bestand 1:200





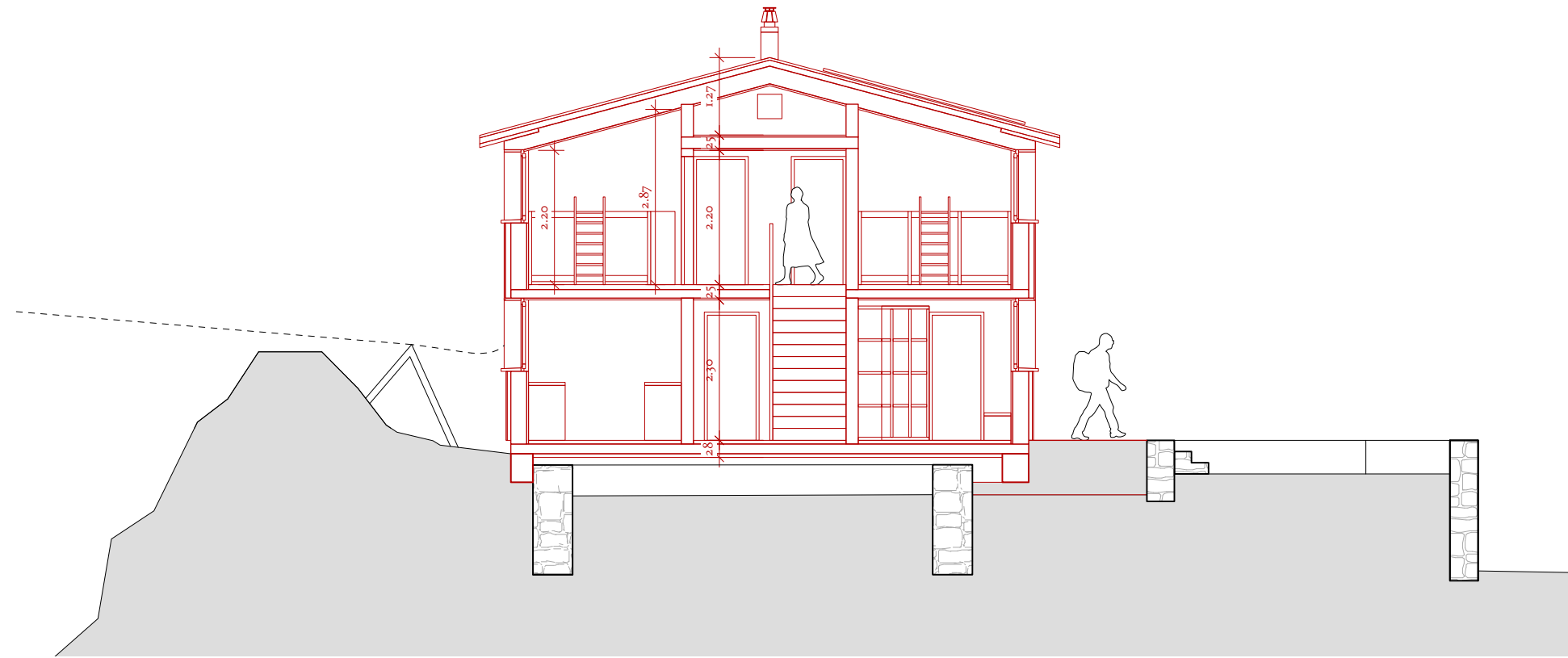
Obergeschoss 1:100

Vorprojekt

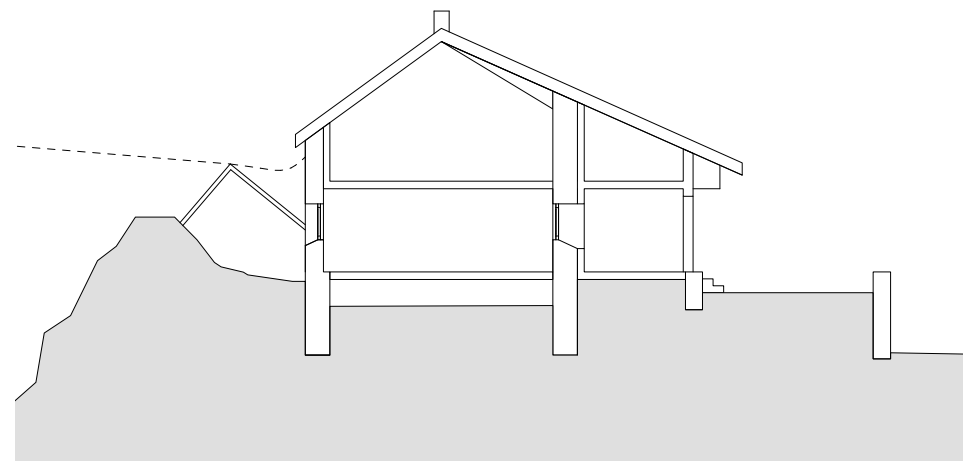


Obergeschoss Bestand 1:200

RHA
116
Cavardirashütte, Disentis



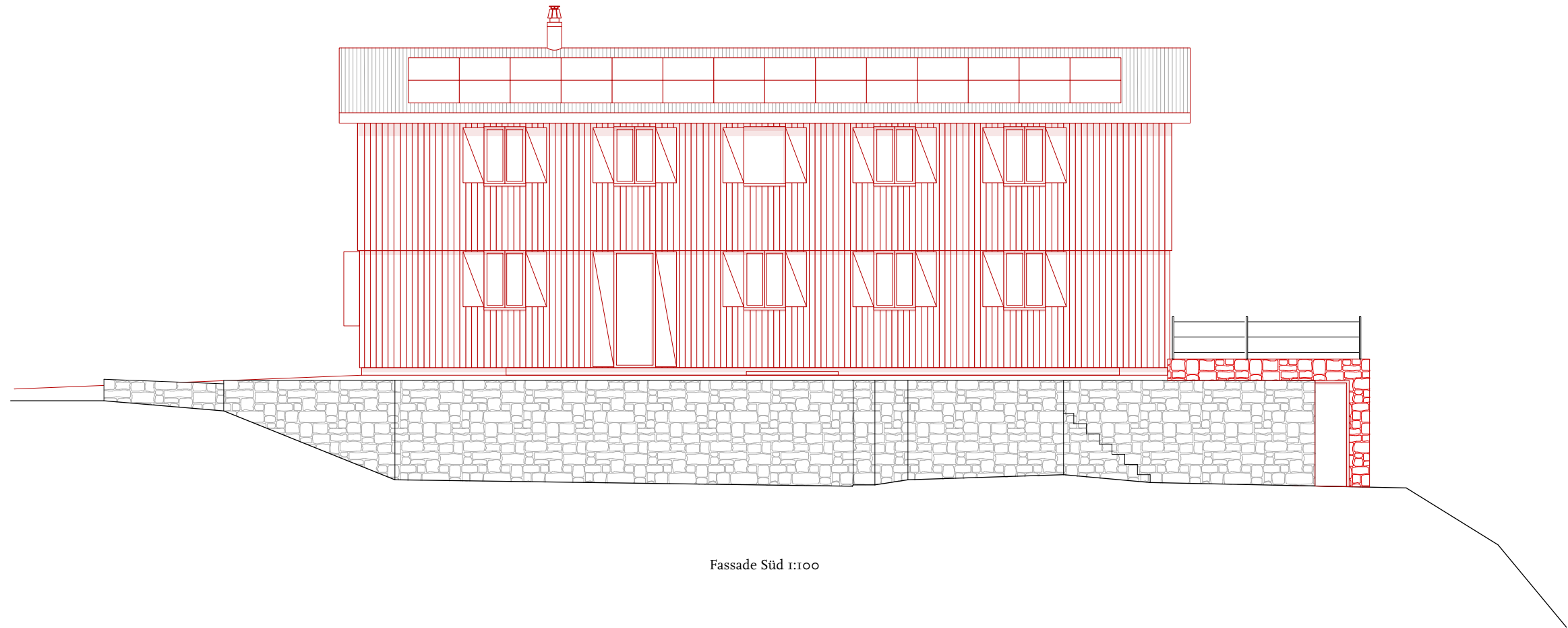
Schnitt 1:100



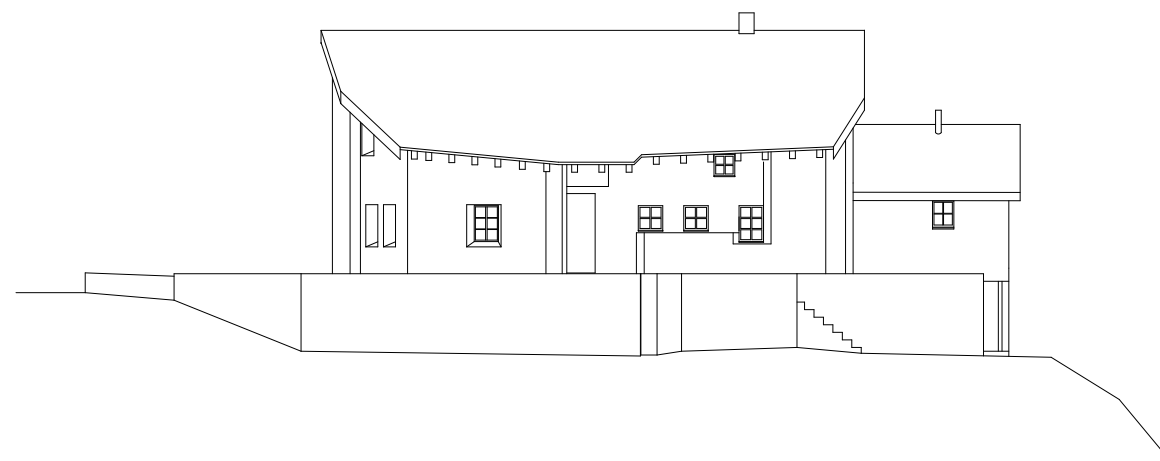
Schnitt Bestand 1:200

Vorprojekt

RHA
116
Cavardirashütte, Disentis



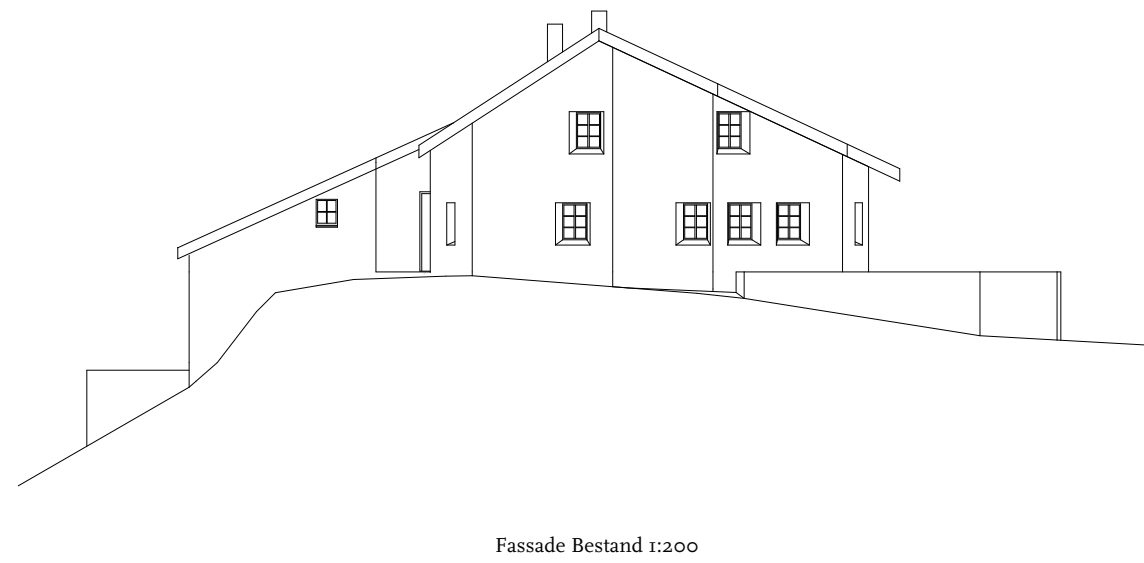
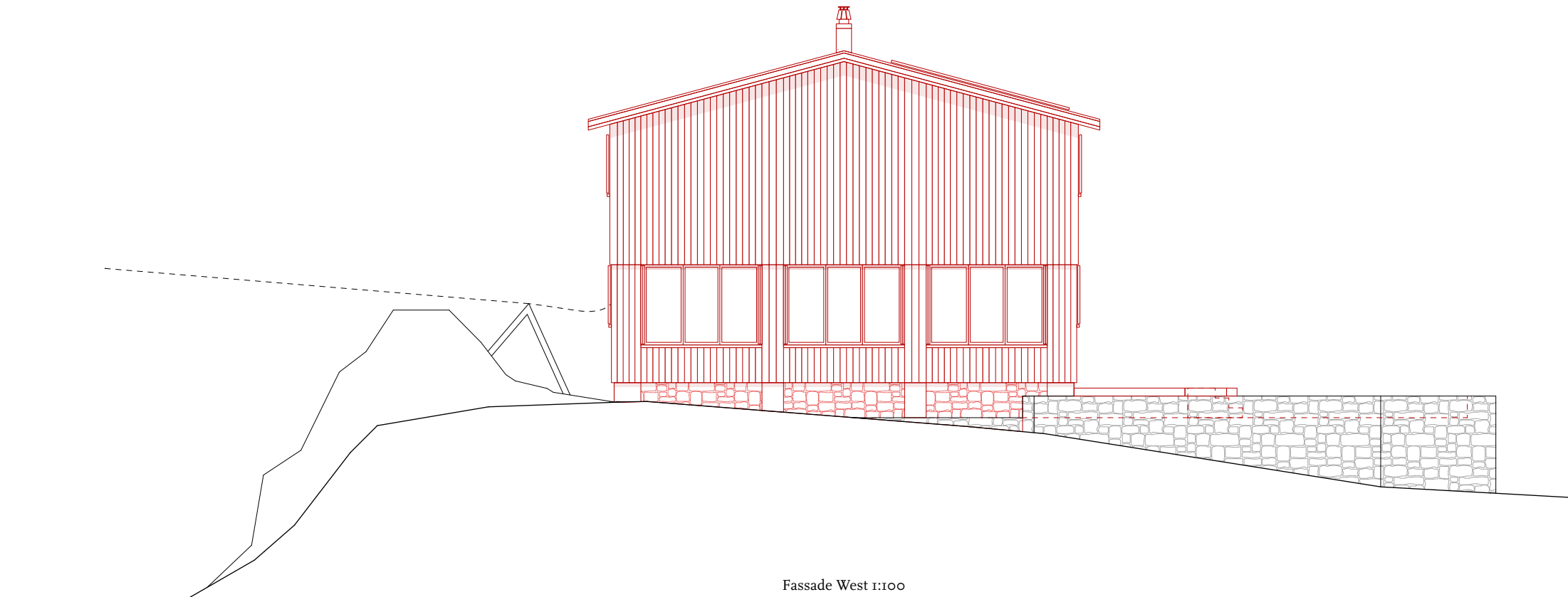
Fassade Süd 1:100



Fassade Bestand 1:200

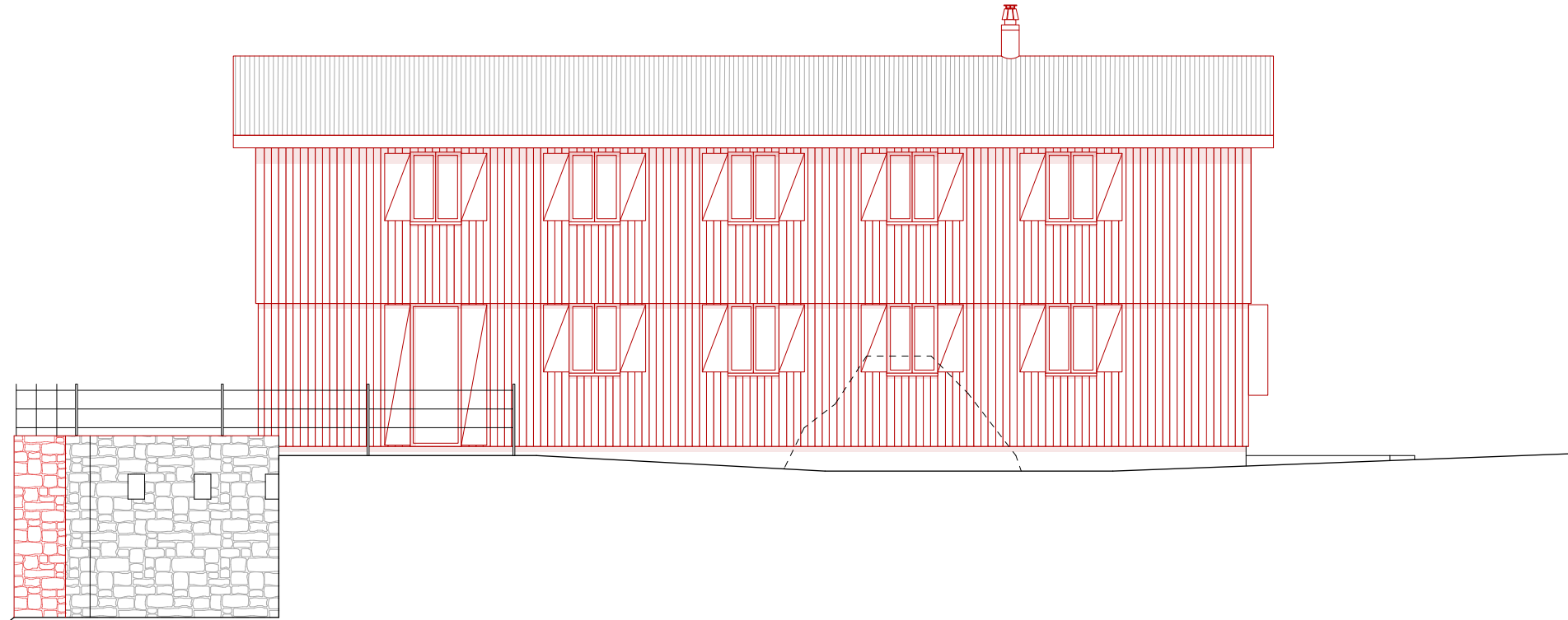
Vorprojekt

RHA
116
Cavardirashütte, Disentis

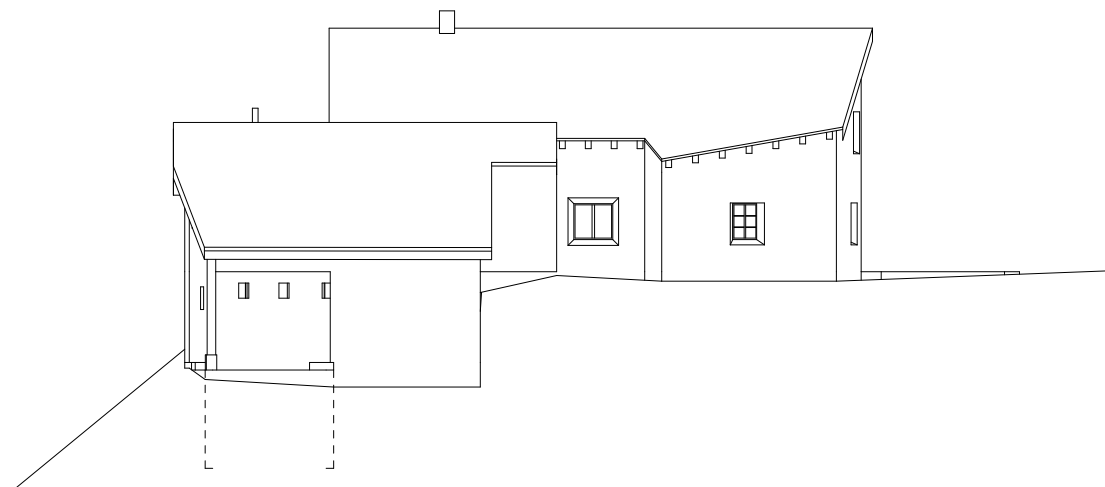


Vorprojekt

RHA
116
Cavardirashütte, Disentis



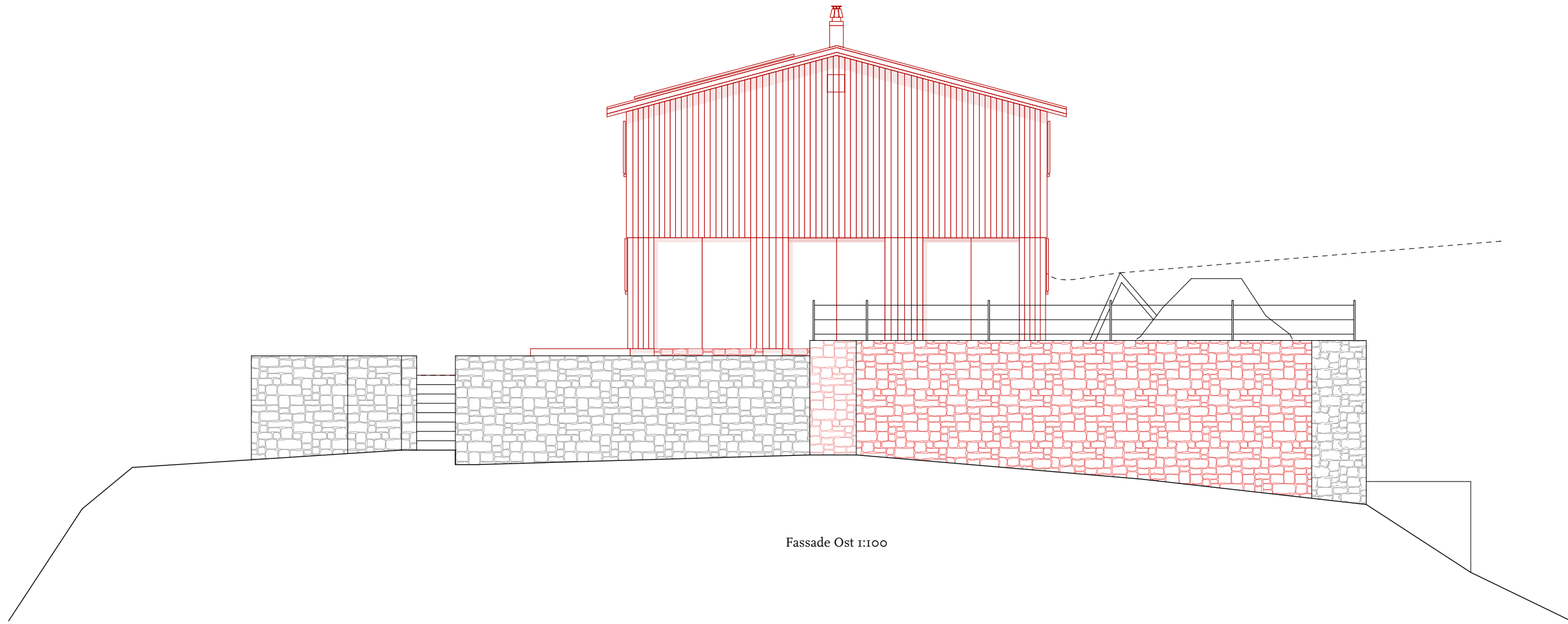
Fassade Nord 1:100



Fassade Bestand 1:200

Vorprojekt

RHA
116
Cavardirashütte, Disentis



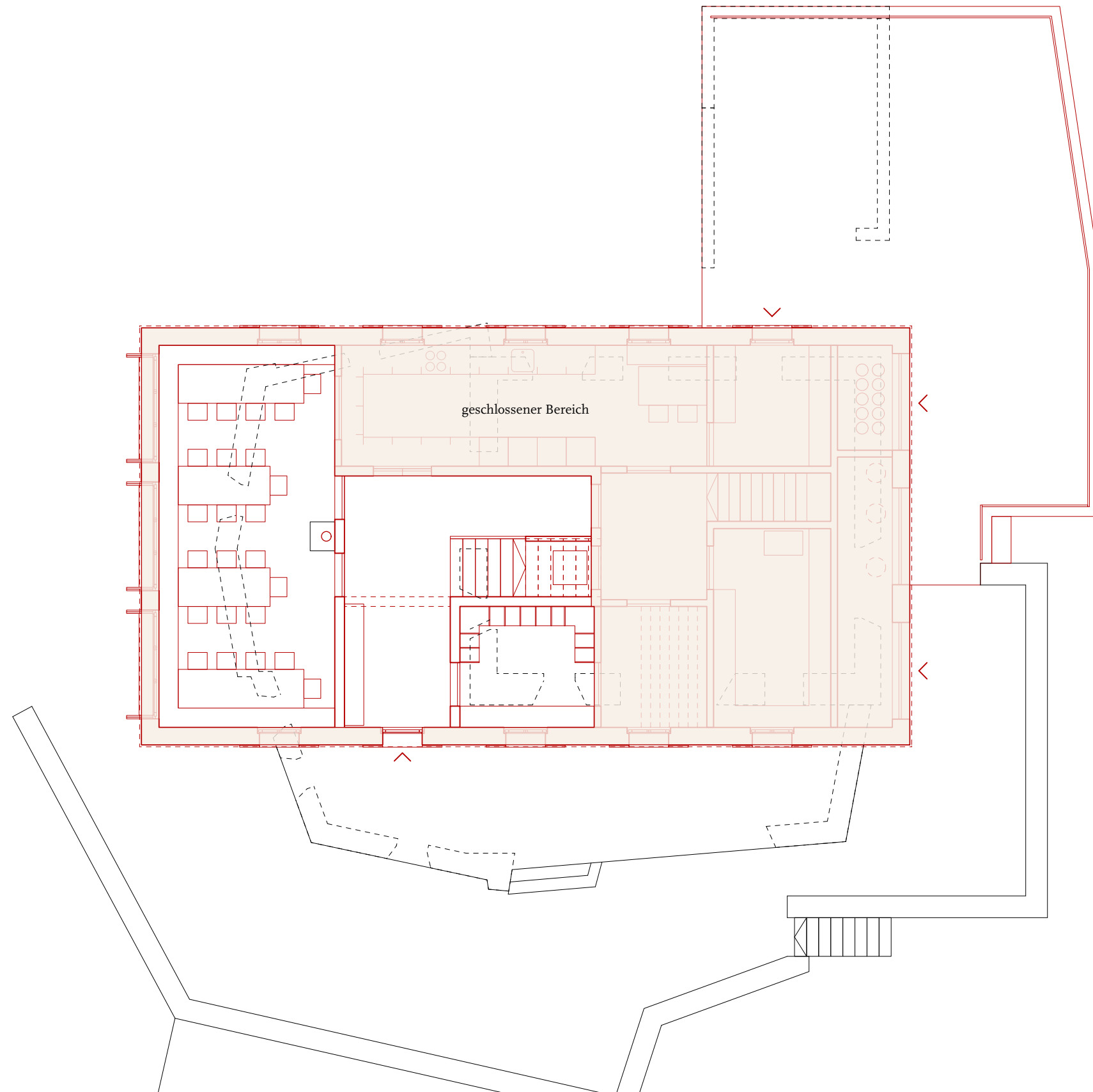
Fassade Ost 1:100



Fassade Bestand 1:200

Vorprojekt

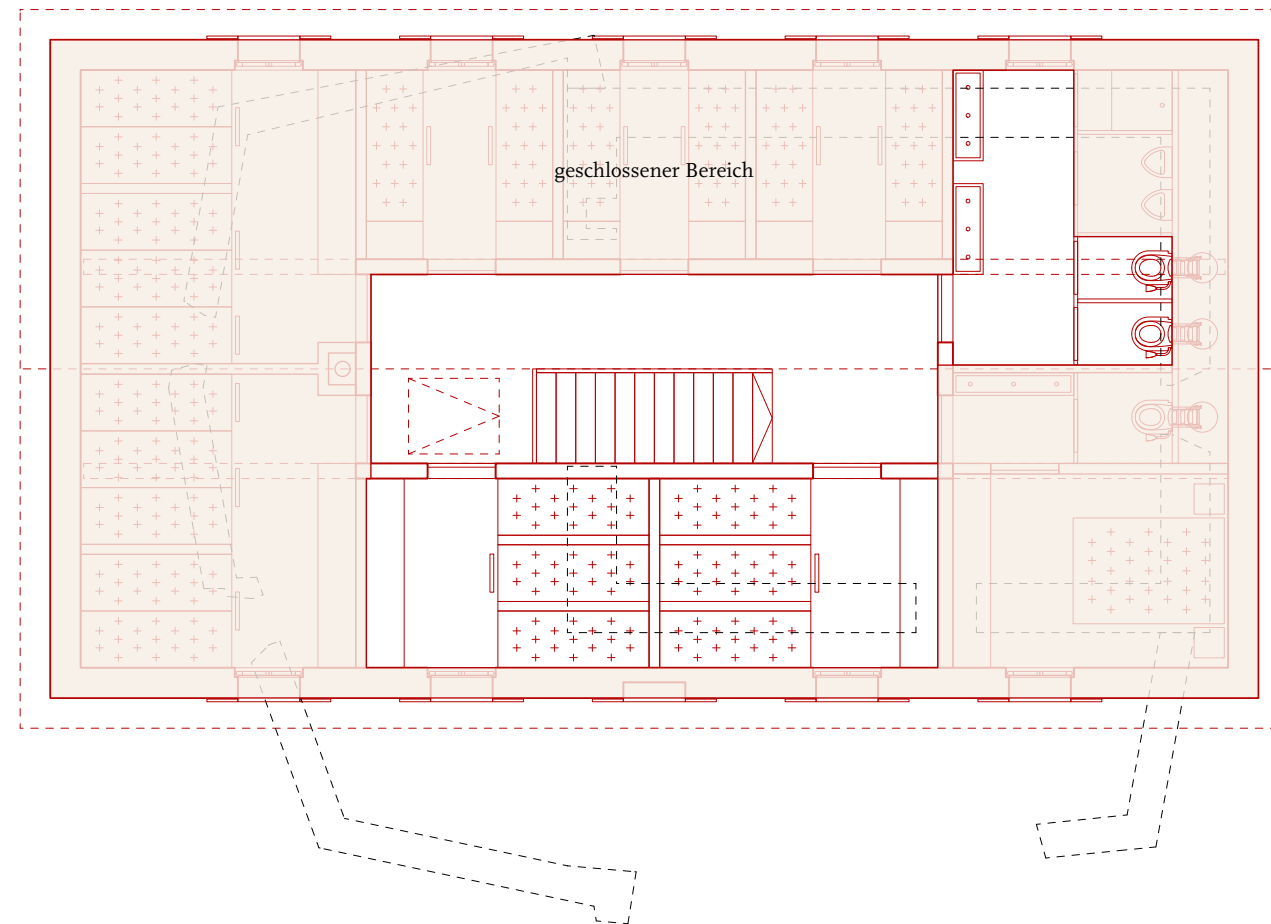
RHA
116
Cavardirashütte, Disentis



Winterbetrieb EG 1:100
Vorprojekt



RHA
116
Cavardirashütte, Disentis



Winterbetrieb OG 1:100
Vorprojekt

